

Christian Moore, LCSW



Author:
The Resilience Breakthrough

WhyTry Founder

At-Risk Youth Advocate

Opening Keynoter
Wednesday 7:00pm



Sam Gladding, PhD, LPCC

Former ACA President

Author: *Creative Arts in Counseling 5th Edition*

Professor:
Wake Forest University

General Session Keynoter
Thursday 10:30am



Advocacy, Treatment, and Collaboration:
60 Years of Counseling Excellence

Sadiqa N. Reynolds, ESQ.

Louisville Urban League:
President and CEO

Advocate for Mental Health Awareness

Closing Brunch Keynoter
Friday 10:30am



Meet you in Louisville!! Save the Dates!!

KCA Conference November 1-3, 2017

Crowne Plaza Hotel - Louisville, KY

Register at www.kyca.org



Conference Theme: Advocacy, Treatment and Collaboration: 60 Years of Counseling Excellence

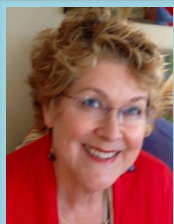
KCA Member Discounts! 6-9 EILA/11.5 Clock Hours for Conference Includes Opening Reception, School or LPCC/LPCA Luncheon, Brunch. Relevant and timely Pre-conference workshops on Wednesday, Nov. 1st for additional EILA Credit & NBCC Hours. EarlyBird Discounts!

Accepting Breakout Session Proposals online: April 1 - July 15
Vendors register online: April 1 - August 1

The Kentucky Counseling Association (KCA) has been approved by NBCC as an Approved Continuing Education Provider, ACEP No. 2018. Programs that do not qualify for NBCC credit are clearly identified. The Kentucky Counseling Association (KCA) is solely responsible for all aspects of the Programs.



Dawn Rowe



Leslie C. Dunn



Erica Myers



Sam Gladding, Ph.D.



Amy Holsinger, Ph.D.



Angela Evans, J.D.



Chris Griffith

**Kentucky Counseling Association:
Pre-Conference Workshops - www.kyca.org
November 1, 2017 - Lunch provided for participants attending sessions all day**

**6 Hr Workshops (EILA/CE Hours)
KCA Members rate - \$160 | non members - \$245
November 1st 9:00am - 4:00pm**

AMSR – Assessing & Managing Suicide Risk
Dawn Rowe, LPCC, Real Solutions Counseling.
Satisfies KRS 210.366. Please register by October 1st to receive free workshop materials.

School Counselors – Power Up Your Words Without Losing Your Cool!
Leslie C. Dunn, dunngood Productions, retired school counselor & popular presenter. Become empowered with strategies that prompt effectiveness in a variety of work settings.

PTSD and Stress Recognition for the Public Safety and Military: The Real Symptoms
Trevor Wilkins, LPCC, NCC (15 year law enforcement veteran, now a professional counselor)

Substance Use Disorders: Everything You Wanted to Know but Didn't Know You Wanted to Ask – Ed Johnson, M.Ed., MAC, LPC, CCS; Program Manager – SE ATTC (GA)

**3 Hr Workshops (EILA/CE Hours)
KCA member rate - \$80 | non members - \$155
November 1st 9:00am – 12:00pm**

Counselors in the Courtroom
Erica Myers, LPCC, RPT-S
Gain understanding of justice system and resources for successful testimony in court.

Creativity and the Creative Arts in Counseling
Sam Gladding, Ph.D., LPCC; Prolific Author; Wake Forest University (NC) Counseling Dept. Examines the history, rationale, theories and techniques of using creativity and creative arts in counseling. Specific research based techniques will be demonstrated.

Current Trends in Ethics: Exploring Current Problems and Proactive Solutions
Jennifer Williamson, Ph.D., LPC, LPCC, NCC; Assoc. Professor – Tarleton State (TX). Covers Counselor Ed/supervision; approaches to ethical issues with clients; promoting client welfare and sound professional conduct.

Dissociative Disorders – Understand the Fragmented Mind
P. Dawn Hinton, LPCC, NCC, HS Counselor, Private Practice
In response to high prevalence of sexual abuse and other personal traumas in young children; this training includes recognition of and resources for Dissociative Disorders.

Law & Regulations
Marty Wesley, PhD, LPCC, LCAC, MAC, Professor & Dean of University of the Cumberlands School of Counseling
Fulfills requirement of 201 KAR 36:030 for licensed professional counselors

Understanding and Applying the ASAM Criteria
Jason Jones, LCADC, LPCA; Recovery KY Treatment Center; Director: Morehead Inspiration Center. Utilizing the American Society of Addiction Medicine's *Definition of Addiction* with the shift away from "placement" criteria to "treatment" criteria.

**3 Hr Workshops (EILA/CE Hours)
KCA member rate - \$80 | non members - \$155
November 1st 1:00 - 4:00pm**

ABC's of Emotional Literacy
Amy Holsinger, Ph.D., LPCC, NCC, RPT-S
Provides multiple play therapy interventions and strategies for children that counselors can implement with students/clients.

Counselors and the Law: How to be the Best Witness for Yourself and Others
Angela Evans, JD, BSW
Techniques for being an effective witness
Testimony preparation
Basic rules of courtroom procedure

Domestic Violence Training
Chris Griffith, LPCC
Workshop meets the legislative mandate (KRS 194A.540)

Introduction to Clinical Supervision: Legal and Ethical Issues
Marty Wesley, Ph.D. LPCC, LCAC, MAC, Professor/Dean at University of the Cumberlands School of Counseling. (201 KAR 36:060, KAR 36:065)

The Counselor's Role in Identifying and Treating Dyslexia
Amber Helme, LPCC
Recognizing, treating, advocating and helping clients who have dyslexia to thrive.

Wellness and Mindfulness as Therapeutic Tasks
Daniel Williamson, Ph.D., LPC, LPCC, NCC, Professor/Dept. Chair at Univ. of Mary Hardin-Baylor (TX). Strategies to incorporate these skills into therapy and self-care.



Trevor Wilkins



Ed. Johnson



P. Dawn Hinton



Jason Jones



Daniel Williamson, Ph.D.
Jennifer Williamson, Ph.D.



Marty Wesley, Ph.D.



Amber Helme